

# We are... The Stonehenge Company



But you might **know us** by other names



As one of central Ohio's leading builders and developers of luxury homes, condominiums, office spaces, and mixed-use developments, The Stonehenge Company recognizes what it takes to create, sustain, and elevate a space into a community and a home. Since our founding in 1987, our mission has been to build and develop attractive, sophisticated, luxury residential and commercial environments that meet the needs and desires of home and business owners, municipalities, and our neighbors. At The Stonehenge Company we are committed to more than just laying the simple brick and mortar of the buildings that compose the communities in which we work. Instead, we strive to capture and reflect the unique elements that define them, elevate them, and help them grow and flourish.

We take pride in our ability to efficiently and cost effectively deliver high-quality products, with an unsurpassed attention to detail. We hold ourselves and our vendors to the highest standards, and this high standard translates into our projects, which we not only build, but also manage and maintain from the very first brick being laid, to every resident or client that walks through our doors and call our properties home, all from our offices located right in the heart of Gahanna.



## *Building in our Communities*





# MORSE ROAD PROJECT

- \$50 Million Investment
- Gated & Fenced Community
- Green Stormwater Management Practices  
Rain Gardens | Pervious Pavers | Reduced Amount of Curbing
- \$13,041,524 Non-School TIF Impact Over 30 Years  
\*Provided by the Economic Development Office City of Gahanna
- \$18,774,831 School Compensation Over 30 Years  
\*Provided by the Economic Development Office City of Gahanna

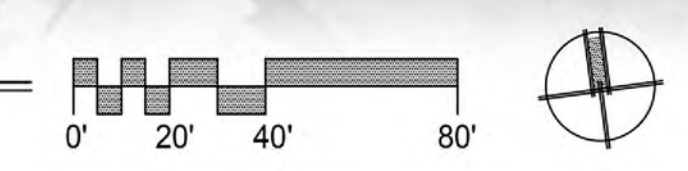






- LEGEND:**
- AF STREET TREE - (2.5" CAL.) 8 TOTAL
  - SITE DECIDUOUS TREE (2.5" CAL.) 52 TOTAL
  - SITE DECIDUOUS TREE - BALD CYPRESS (2" CAL.) 20 TOTAL
  - SITE EVERGREEN TREE (2" CAL.) 17 TOTAL
  - SITE ORNAMENTAL TREE (2" CAL.) 28 TOTAL
  - x --- TREE PROTECTION FENCE

**1 OVERALL LANDSCAPE PLAN**  
Scale: 1" = 40'-0"



**BLENDON GARDENS**  
landscape • design • installation  
9590 S. Old State Road,  
Lewis Center, OH 43035  
(blendongardens.com)  
Phone: (614) 840-0500

REVISIONS			ORIGINAL ISSUE DATE: 11/29/22	
NO.	DATE	DESCRIPTION	NO.	DATE
1	01-31-23	MUNICIPALITY COMMENTS		
PROJECT NO.: 211084			PROJECT MANAGER:	
DESIGNED BY:			DRAWN BY: JM	
OVERALL LANDSCAPE PLAN			OH	
ELLIOT PARC			COLUMBUS	
3500 Snouffer Road, Suite 225 Columbus, OH 43235 614.761.1661 phone www.v3co.com				
DRAWING NO.			L-1	



# RAIN GARDEN EXAMPLES







MEDIAN BRICK  
BLOOMFIELD  
MODULAR

SW 7006

Extra White

SW 6991  
Black Magic  
Metallic Finish  
Location Number: 251-02



MORSE ROAD PROJECT - **ELEVATION DESIGN CONCEPTS**



MORSE ROAD PROJECT-COLOR MATRIX

**BUILDING UPPER COLORS**

Dress Blues  
SW 9176

Dried Thyme  
SW 9186

Rockwood Red  
SW 2802

Peppercorn  
SW 7574

1/2" x 1/2" x 1/2" #4281, 8" x 7 1/8" (#123)

TRIANGLE BRICK  
OXFORD 1360  
MODULAR

HERITAGE BRICK  
BLOOMFIELD  
MODULAR

4" x 4" #43

PELLA DOUBLE HUNG  
MATTE BLACK  
SPECIAL GRILLE

4" x 4" #3151, #5-6283, 1085-1, 1181

9" x 4" #3151, SW 6991

CODING ARCHITECTURAL NOTES:

- 1. BRICK
- 2. ALUMINUM COPINGS
- 3. BOARD AND BATTEN CEMENT BOARD PANELS AND TRIM
- 4. CEMENT BOARD SIDING AND TRIM
- 5. BRONZE ALUMINUM RAILINGS
- 6. BRONZE ALUMINUM DOORS
- 7. WINDOWS PELLA DOUBLE HUNG MATTE BLACK
- 8. STEEL CANOPY OVER ENTRY DOORS



#	DATE	INT.	REVISIONS

BUILDING ELEVATIONS - 24 UNIT (1 & 2 BEDROOM)

Harper Architectural Studio, LLC

424A Beecher Rd  
Birmingham, AL 35209  
PH: (814) 885-2550

SHEET DESIGNATION:

A4

DATE: SHEET #

COPYRIGHT © 2022 HARPER ARCHITECTURAL STUDIO



MORSE ROAD PROJECT - COLOR MATRIX

UPPER BUILDING COLORS



GROUND TRIM / LOUVERS / AWNINGS



LOWER BRICK FACADE



SAMPLE WINDOW DETAIL



EXTERIOR ELEVATION - FRONT (BUILDING J)  
SCALE: 1/8" = 1'-0"

CODED ARCHITECTURAL NOTES:

- 1. BRICK
- 2. ALUMINUM COPINGS
- 3. BOARD AND BATTEN CEMENT BOARD PANELS AND TRIM
- 4. CEMENT BOARD SIDING AND TRIM
- 5. BRONZE ALUMINUM RAILINGS
- 6. BRONZE ALUMINUM DOORS
- 7. WINDOWS PELLA DOUBLE HUNG MATTE BLACK
- 8. STEEL CANOPY OVER ENTRY DOORS



EXTERIOR ELEVATION - BACK (BUILDING J)  
SCALE: 1/8" = 1'-0"



EXTERIOR ELEVATION - SIDE (BUILDING J)  
SCALE: 1/8" = 1'-0"



EXTERIOR ELEVATION - SIDE (BUILDING J)  
SCALE: 1/8" = 1'-0"

DATE INT. REVISIONS

BUILDING ELEVATIONS - 24 UNIT (2 BEDROOM)

Harper Architectural Studio, LLC

SHEET DESIGNATION:

A7

DATE:

SHEET #

COPYRIGHT © 2022 HARPER ARCHITECTURAL STUDIO

4244 Bercher Rd.  
Baltimore, MD 21206  
PH: (410) 895-2850



**BUILDING UPPER COLORS**

**Dress Blues**  
SW 9176

**Dried Thyme**  
SW 8106

**Rockwood Red**  
SW 2802

**Peppercorn**  
SW 7574



1. BRICK
2. ALUMINUM COPINGS
3. BOARD AND BATTEN CEMENT BOARD PANELS AND TRIM
4. CEMENT BOARD SIDING AND TRIM
5. BRONZE ALUMINUM RAILINGS
6. BRONZE ALUMINUM DOORS
7. WINDOWS PELLA DOUBLE HUNG MATTE BLACK
8. STEEL CANOPY OVER ENTRY DOORS

BUILDING ELEVATIONS - 24 UNIT (1 & 2 BEDROOM)

Harper Architectural Studio, LLC

424A Beecher Rd.  
Gahanna, Ohio 43230  
Ph: (614) 895-2050

SHEET DESIGNATION:

A3

DATE	SHEET #
------	---------



TREE REQUIREMENT NOTES:

1 CALIPER INCH REQUIRED PER 1,000 S.F. OF IMPERVIOUS SURFACE:

TOTAL AMOUNT OF IMPERVIOUS SURFACE = 279,239 S.F.  
280 CALIPER INCHES OF TREES REQUIRED

EXISTING TREES PRESERVED COUNT TOWARD REQUIREMENTS:

EX. TREES PRESERVED WITH 6-19 INCH DIAMETER: 132 TREES @ 1 CAL. INCH CREDIT = 132 CAL. INCHES  
EX. TREES PRESERVED WITH 20+ INCH DIAMETER: 16 TREES @ 1.5 CAL. INCHES CREDIT = 24 CAL. INCHES  
EX. PREFERRED SPECIES TREES PRESERVED WITH 20+ INCH DIAMETER: 38 TREES @ 2 CAL. INCHES CREDIT = 76 CAL. INCHES

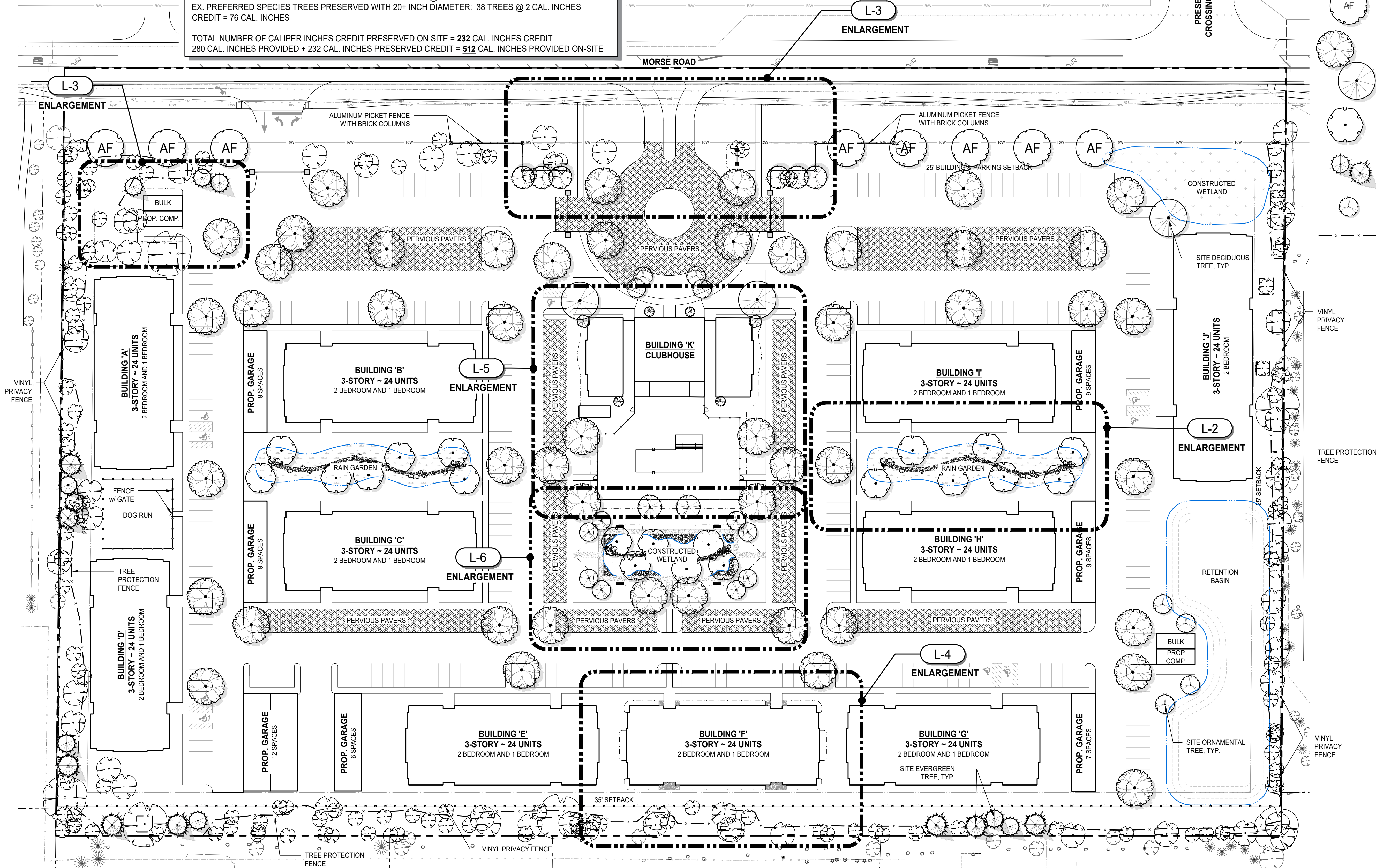
TOTAL NUMBER OF CALIPER INCHES CREDIT PRESERVED ON SITE = 232 CAL. INCHES CREDIT  
280 CAL. INCHES PROVIDED + 232 CAL. INCHES PRESERVED CREDIT = 512 CAL. INCHES PROVIDED ON-SITE

STREET TREES - PLANT LIST

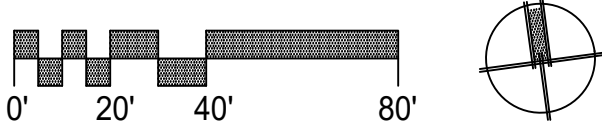
QTY.	CODE	COMMON NAME	BOTANICAL NAME	INSTALL SIZE	CONDITION
DECIDUOUS TREES					
8	AF	AUTUMN BLAZE MAPLE	ACER FREEMANII 'AUTUMN BLAZE'	2.5" CAL.	B&B

LEGEND:

- AF STREET TREE - (2.5" CAL.) 8 TOTAL
- SITE DECIDUOUS TREE (2.5" CAL.) 52 TOTAL
- SITE DECIDUOUS TREE - BALD CYPRESS (2" CAL.) 20 TOTAL
- SITE EVERGREEN TREE (2" CAL.) 17 TOTAL
- SITE ORNAMENTAL TREE (2" CAL.) 28 TOTAL
- TREE PROTECTION FENCE - SEE DETAIL 3 / L-7

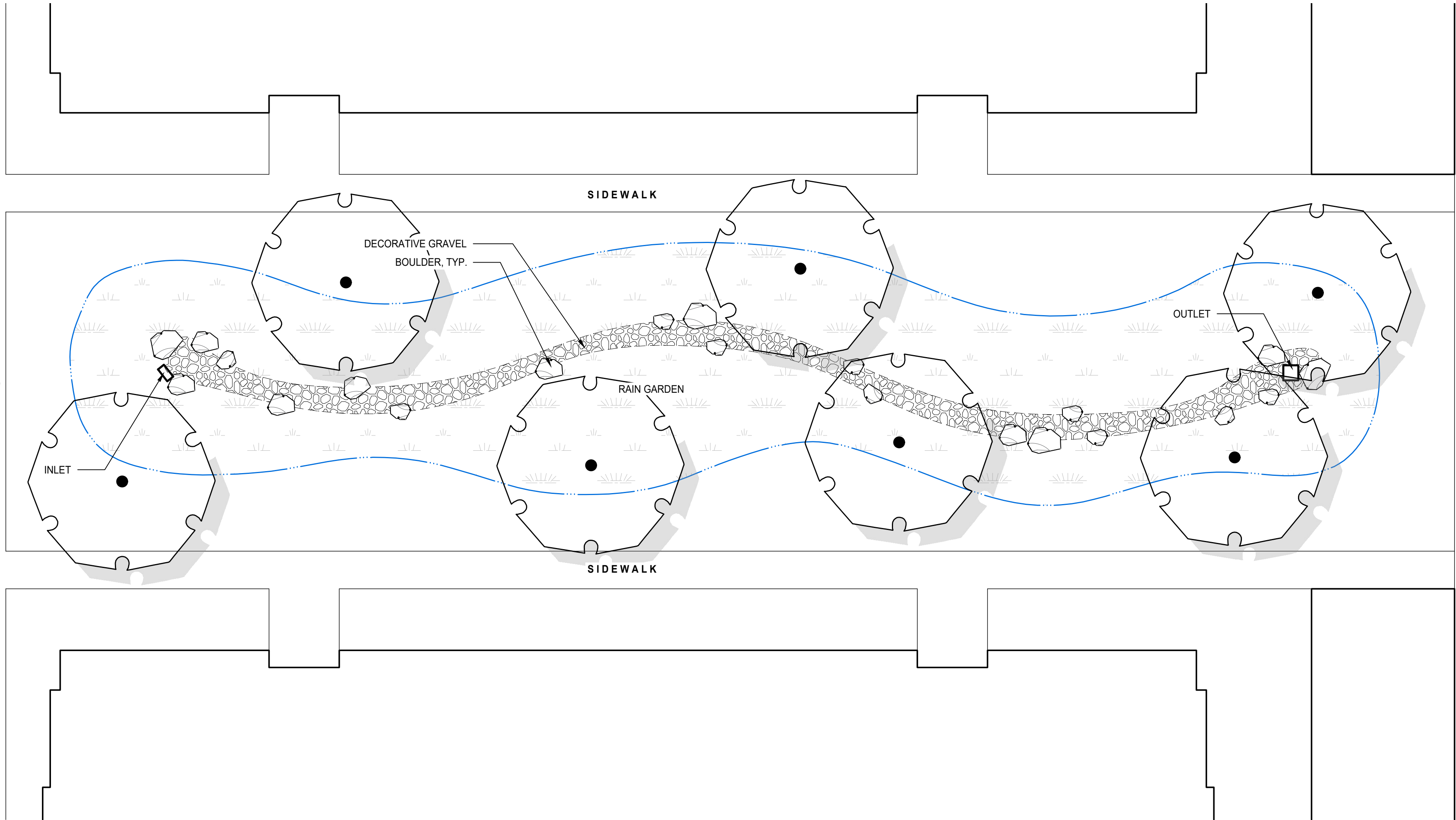
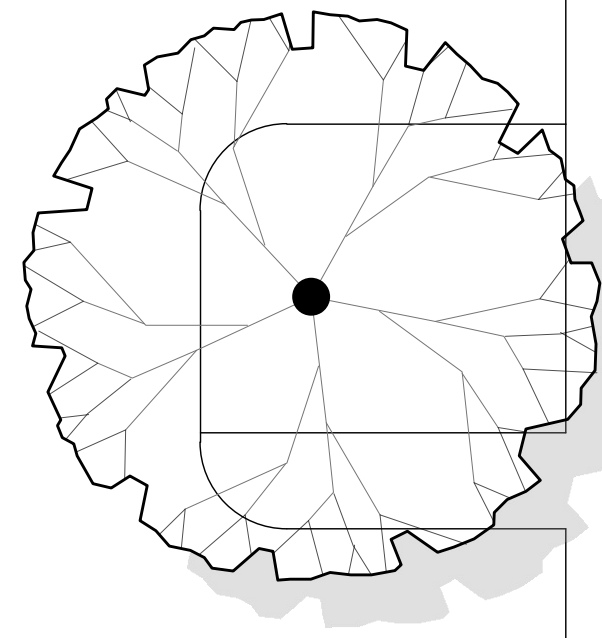


1 OVERALL LANDSCAPE PLAN  
Scale: 1" = 40'-0"

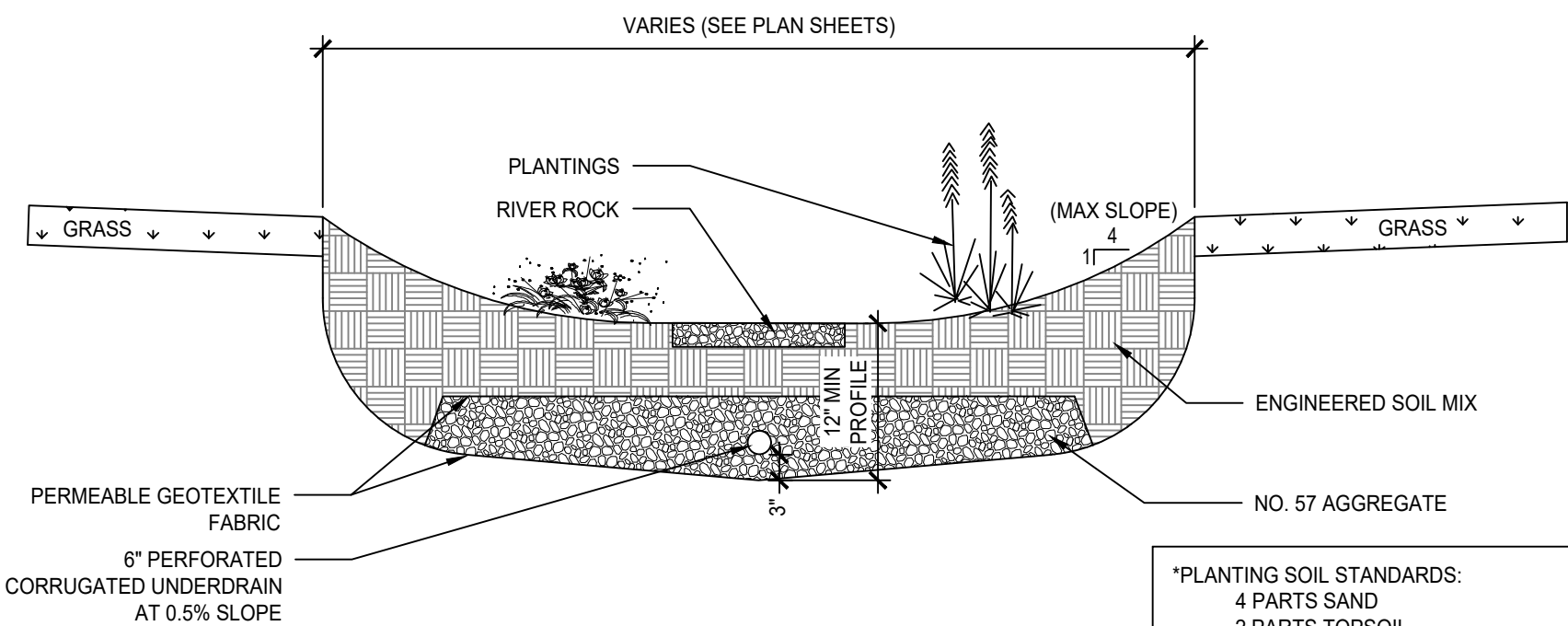


REVISIONS		DESCRIPTION
NO.	DATE	
1	01-31-23	MUNICIPALITY COMMENTS
2	02-28-23	TREE CALIPER REVISIONS
PROJECT NO.: 211084		ORIGINAL ISSUE DATE: 11/29/22
PROJECT MANAGER:		
DESIGNED BY:		
DRAWN BY: JM		





1 RAIN GARDEN TYPICAL LANDSCAPE PLAN  
Scale: 1" = 10'-0"



RAIN GARDEN SECTION

\*PLANTING SOIL STANDARDS:  
4 PARTS SAND  
2 PARTS TOPSOIL  
2 PARTS COMPOST  
pH = 5.2 - 7.0  
INFILTRATION RATE = 0.5 in/hr MIN.  
NO. 57 AGGREGATE:  
No. 57 AGGREGATE  
MULCH LAYER:  
SHREDDED HARDWOOD 2-3 in THICK

### CONSTRUCTION SEQUENCE FOR RAIN GARDEN BASIN:

1. COMPLETE SITE GRADING. PROVIDE PROTECTION SO STORMWATER RUNOFF IS PROHIBITED FROM ENTERING THE BIORETENTION BASIN DURING CONSTRUCTION.
2. SUBGRADE PREPARATION
  - a. EXISTING SUBGRADE IN BIORETENTION BASIN SHOULD NOT BE COMPACTED OR SUBJECT TO EXCESSIVE CONSTRUCTION EQUIPMENT TRAFFIC.
  - b. INITIAL EXCAVATION CAN BE PERFORMED DURING ROUGH SITE GRADING, BUT SHOULD NOT BE CARRIED TO WITHIN ONE FOOT OF THE FINAL BOTTOM ELEVATION. FINAL EXCAVATION SHOULD NOT TAKE PLACE UNTIL ALL DISTURBED AREAS IN THE DRAINAGE AREA HAVE BEEN STABILIZED.
  - c. WHERE EROSION OF SUBGRADE HAS CAUSED ACCUMULATION OF FINE MATERIALS AND/OR SURFACE PONDING IN THE GRADED BOTTOM, THIS MATERIAL SHOULD BE REMOVED WITH LIGHT EQUIPMENT AND THE UNDERLYING SOILS SCARIFIED TO A MINIMUM DEPTH OF SIX INCHES WITH A YORK RAKE OR EQUIVALENT BY LIGHT TRACTOR.
  - d. BRING SUBGRADE OF BIORETENTION AREA TO LINE, GRADE, AND ELEVATIONS INDICATED. FILL AND LIGHTLY REGRADE ANY AREAS DAMAGED BY EROSION, PONDING, OR TRAFFIC COMPACTION. ALL BIORETENTION AREAS SHOULD BE LEVEL GRADE ON THE BOTTOM.
3. STABILIZE THE GRADING EXCEPT WITHIN THE BIORETENTION BASIN. THE BIORETENTION BASIN MAY BE USED AS A TEMPORARY SEDIMENT TRAP PROVIDED THE PROPOSED FINISH ELEVATION OF THE BED IS AT LEAST 12 INCHES LOWER THAN THE BOTTOM ELEVATION OF THE SEDIMENT TRAP (IF USED AS SUCH, ALL ACCUMULATED MATERIAL AND AT LEAST 12 INCHES OF SOIL SHOULD BE REMOVED).
4. EXCAVATE THE BIORETENTION BASIN TO PROPOSED INVERT DEPTH AND SCARIFY THE EXISTING SOIL SURFACES. DO NOT COMPACT SOILS.
5. BACKFILL THE BIORETENTION BASIN WITH THE SOIL MIXTURE AS SHOWN ON THE DESIGN PLANS AND SPECIFICATIONS. OVERFILLING IS RECOMMENDED TO ACCOUNT FOR SETTLING. LIGHT HAND TAMPING IS ACCEPTABLE IF NECESSARY.
6. COMPLETE FINAL GRADING TO ACHIEVE PROPOSED DESIGN ELEVATIONS, LEAVING SPACE FOR UPPER MULCH AS SPECIFIED ON PLANS.
7. BIORETENTION BASIN INSTALLATION
  - a. UPON COMPLETING SUBGRADE WORK, NOTIFY THE ENGINEER TO INSPECT AT HIS/HER DISCRETION BEFORE PROCEEDING WITH BIORETENTION INSTALLATION.
  - b. FOR THE SUBSURFACE STORAGE/INFILTRATION BED INSTALLATION, SOILS SHOULD BE PLACED ON THE BOTTOM TO THE SPECIFIED DEPTH.
  - c. THE CONTRACTOR SHALL INSTALL UNDERDRAIN AS DETAILED ON THE PLANS AND AS DIRECTED BY THE ENGINEER. THE UNDERDRAIN SHALL BE CONNECTED DOWNSTREAM TO THE SPECIFIED DRAINAGE STRUCTURE. THE UNDERDRAIN SHALL BE CONSTRUCTED WITH A MINIMUM 0.5% SLOPE.
  - d. PLANTING SOIL SHOULD BE PLACED IMMEDIATELY AFTER APPROVAL OF SUBGRADE PREPARATION/BED INSTALLATION. ANY ACCUMULATION OF DEBRIS OR SEDIMENT THAT TAKES PLACE AFTER APPROVAL OF SUBGRADE SHOULD BE REMOVED PRIOR TO INSTALLATION OF PLANTING SOIL AT NO EXTRA COST TO THE OWNER.
  - e. INSTALL APPROVED PLANTING SOIL IN 18-INCH MAXIMUM LIFTS AND LIGHTLY COMPACT (TAMP WITH BACKHOE BUCKET OR BY HAND). KEEP EQUIPMENT MOVEMENT OVER PLANTING SOIL TO A MINIMUM - DO NOT OVER-COMPACT. INSTALL PLANTING SOIL TO GRADES INDICATED ON THE DRAWINGS. LOADS ON THE SOIL SHOULD NOT EXCEED FOUR POUNDS PER SQUARE INCH.
  - f. PRESOAK THE PLANTING SOIL AT LEAST 24 HOURS PRIOR TO PLANTING VEGETATION TO AID IN SETTLEMENT.
  - g. PLANT TREES AND SHRUBS ACCORDING TO SUPPLIER'S RECOMMENDATIONS AND ONLY FROM MID-MARCH THROUGH THE END OF JUNE OR FROM MID-SEPTEMBER THROUGH MID-NOVEMBER.
  - h. INSTALL TWO OR THREE INCHES OF SHREDDED HARDWOOD MULCH (MINIMUM AGE SIX MONTHS) EVENLY AS SHOWN ON PLANS. DO NOT APPLY MULCH IN AREAS WHERE GROUND COVER IS TO BE GRASS OR WHERE COVER WILL BE ESTABLISHED BY SEEDING.
  - i. PROTECT THE BIORETENTION BASIN FROM SEDIMENT AT ALL TIMES DURING CONSTRUCTION. APPROPRIATE MEASURES SHOULD BE USED AT THE TOE OF SLOPE THAT IS ADJACENT TO THE BIORETENTION BASIN TO PREVENT SEDIMENT FROM WASHING INTO THESE AREAS DURING CONSTRUCTION.
  - j. WHEN THE SITE IS FULLY VEGETATED AND THE SOIL MANTLE IS STABILIZED, NOTIFY THE PLAN DESIGNER TO INSPECT THE BIORETENTION BASIN DRAINAGE AREA AT HIS/HER DISCRETION BEFORE THE AREA IS BROUGHT ONLINE AND SEDIMENT CONTROL DEVICES REMOVED.
8. MULCH AND INSTALL EROSION PROTECTION AT SURFACE FLOW ENTRANCES WHERE NECESSARY.

### RAIN GARDEN - PLANT LIST

QTY.	CODE	COMMON NAME	BOTANICAL NAME	INSTALL SIZE	CONDITION
SHRUBS					
-	IV	WINTERBERRY HOLLY	ILEX VERTICILLATA	3 GAL.	CONTAINER
-	CO	DOGWOOD	CORNUS SP.	5 GAL.	CONTAINER
-	AP	BOTTLEBRUSH BUCKEYE	AESCLUSUS PARVIFLORA	5 GAL.	CONTAINER
-	AR	CHOKEBERRY	ARONIA SP.	3 GAL.	CONTAINER
-	IVH	HENRY'S GARNET SWEETSPIRE	ITEA VIRGINICA 'HENRY'S GARNET'	3 GAL.	CONTAINER
-	PO	SUMMER WINE NINEBARK	PHYSOCARPUS OPULIFOLIUS 'SUMMER WINE'	3 GAL.	CONTAINER
ORNAMENTAL GRASSES & PERENNIALS					
-	CA	KARL FOERSTER FEATHER REED GRASS	CALAMAGROSTIS ACUTIFLORA 'KARL FOERSTER'	2 GAL.	CONTAINER
-	PV	HEAVY METAL SWITCH GRASS	PANICUM VIRGATUM 'HEAVY METAL'	2 GAL.	CONTAINER
-	CS	TUSSOCK SEDGE	CAREX STRICTA	2 GAL.	CONTAINER
-	AT	BUTTERFLY MILKWEED	ASCLEPIAS TUBEROSA	2 GAL.	CONTAINER
-	AS	ASTERS	ASTER SP.	2 GAL.	CONTAINER
-	LC	CARDINAL FLOWER	LOBELIA CARDINALIS	2 GAL.	CONTAINER
-	SSC	SOLAR CASCADE GOLDENROD	SOLIDAGO 'SOLAR CASCADE'	2 GAL.	CONTAINER

**NOTE:**  
RAIN GARDEN LIST IS NOT COMPREHENSIVE. NO QUANTITIES ARE SHOWN - DETAILED PLANTING PLAN AND LIST WILL BE PROVIDED PRIOR TO CONSTRUCTION.

2 RAIN GARDEN BASIN DETAIL  
NOT TO SCALE

#### REV I S I O N S

NO.	DATE	DESCRIPTION
1	01-31-23	MUNICIPALITY COMMENTS
2	02-28-23	TREE CALIPER REVISIONS

PROJECT NO.: 211084

PROJECT MANAGER:

DESIGNED BY:

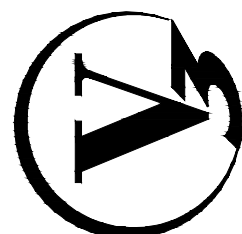
DRAWN BY: JM

## LANDSCAPE ENLARGEMENTS

## ELLIOT PARC

COLUMBUS

3500 Snouffer Road,  
Suite 225  
Columbus, OH 43235  
614.761.1661 phone  
www.v3co.com



DRAWING NO.

L-2

**BLENDON GARDENS**  
landscape • design • installation  
9590 S. Old State Road,  
Lewis Center, OH 43035  
(blendongardens.com)  
Phone: (614) 840-0500

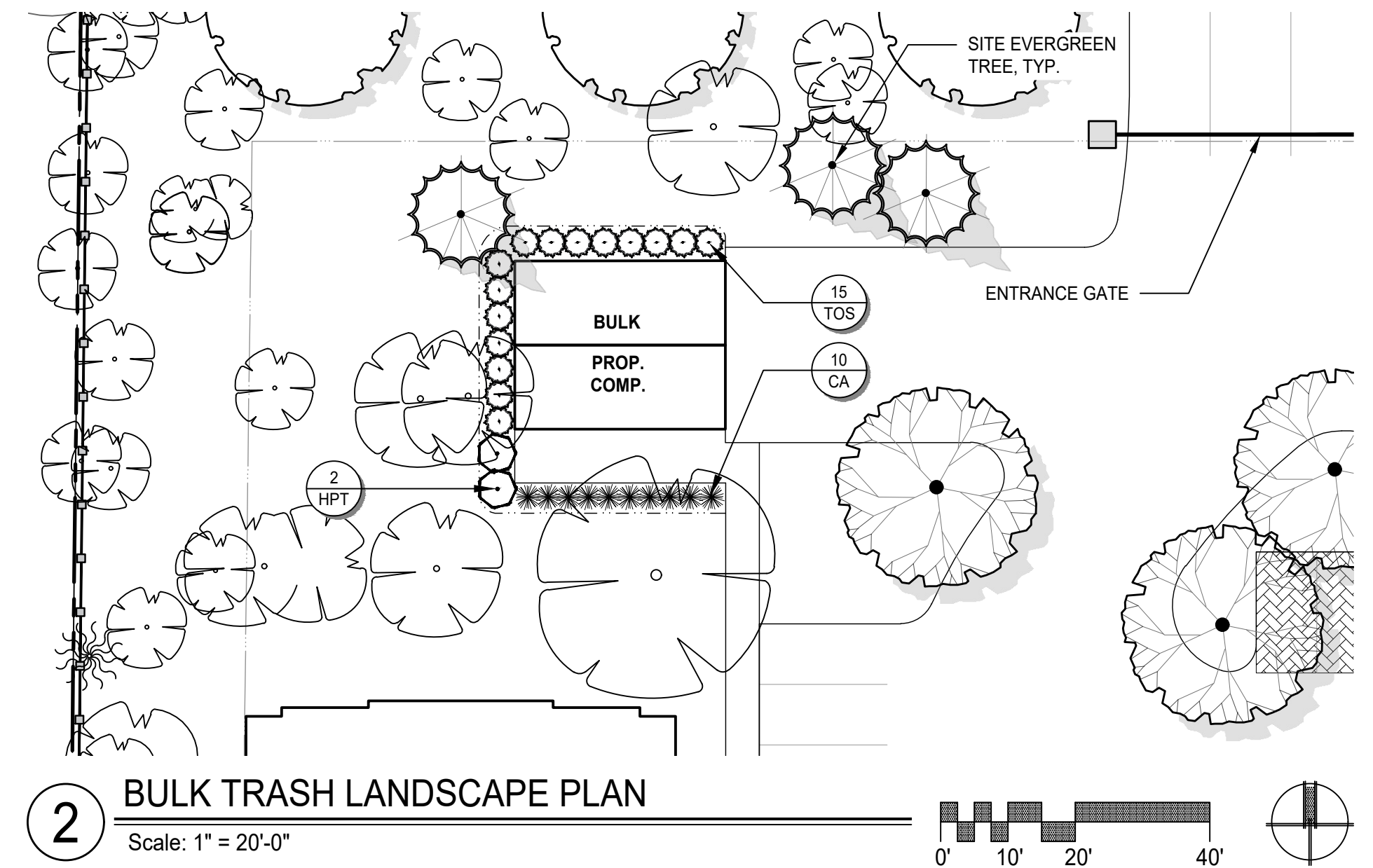


ENTRANCE - PLANT LIST

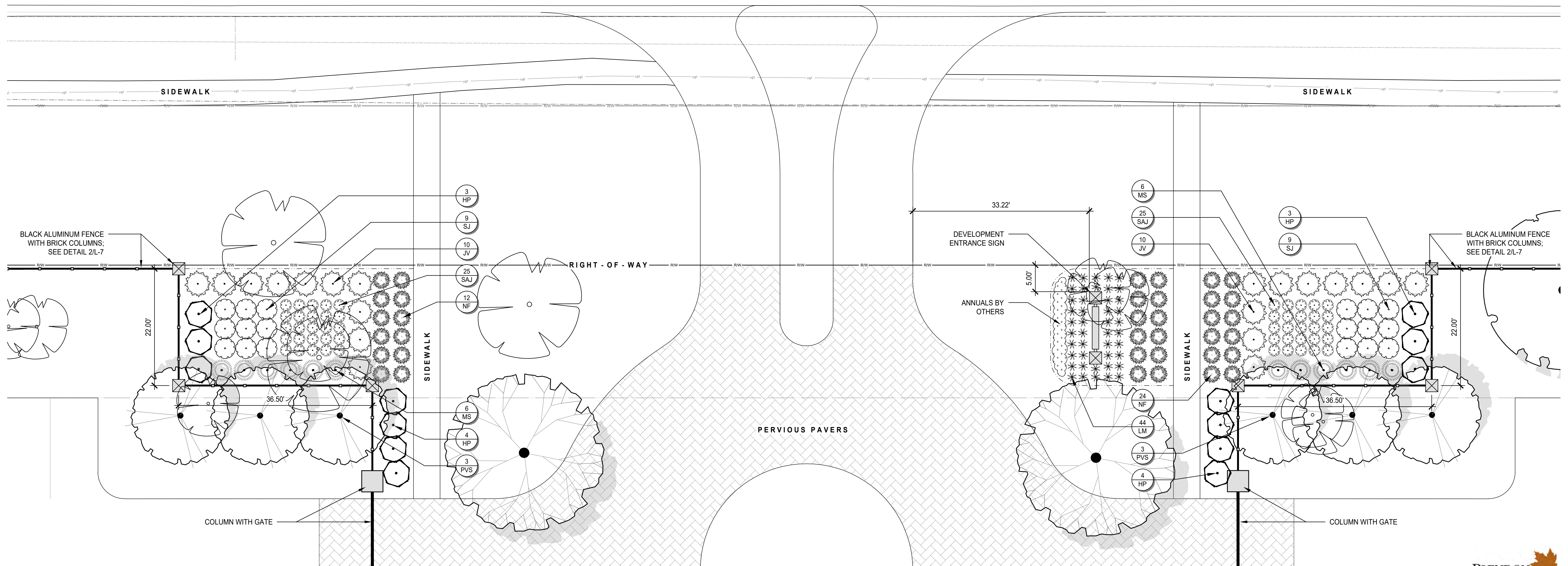
QTY.	CODE	COMMON NAME	BOTANICAL NAME	INSTALL SIZE	CONDITION
ORNAMENTAL TREES					
6	PVS	SCHUBERT CHERRY	PRUNUS VIRGINIANA 'SCHUBERT'	2" CAL.	CONTAINER
SHRUBS					
14	HP	LITTLE LIME HYDRANGEA	HYDRANGEA PANICULATA 'LITTLE LIME'	5 GAL.	CONTAINER
18	SJ	GOLDMOUND SPIREA	SPIRAEA JAPONICA 'GOLDMOUND'	2 GAL.	CONTAINER
20	JV	GREY OWL JUNIPER	JUNIPERUS VIRGINIANA 'GREY OWL'	3 GAL.	CONTAINER
ORNAMENTAL GRASSES & PERENNIALS					
12	MS	MORNING LIGHT MAIDEN GRASS	MISCANTHUS SINENSIS 'MORNING LIGHT'	3 GAL.	CONTAINER
44	LM	VARIEGATED LILYTURF	LIRIOPE MUSCARI 'VARIEGATA'	1 GAL.	CONTAINER
36	NF	WALKER'S LOW CATMINT	NEPETA X FAASSENII 'WALKER'S LOW'	1 GAL.	CONTAINER
50	SAJ	AUTUMN JOY SEDUM	SEDUM X 'AUTUMN JOY'	1 GAL.	CONTAINER

BULK TRASH / COMPACTOR BLDG. - PLANT LIST

QTY.	CODE	COMMON NAME	BOTANICAL NAME	INSTALL SIZE	CONDITION
SHRUBS					
2	HPT	TARDIVA HYDRANGEA	HYDRANGEA PANICULATA 'TARDIVA'	5 GAL.	CONTAINER
16	TOS	EMERALD GREEN ARBORVITAE	THUJA OCCIDENTALIS 'SMARAGD'	6' HT.	CONTAINER
ORNAMENTAL GRASSES & PERENNIALS					
10	CA	KARL FOERSTER FEATHER REED GRASS	CALAMAGROSTIS ACUTIFLORA 'KARL FOERSTER'	2 GAL.	CONTAINER



2 BULK TRASH LANDSCAPE PLAN  
Scale: 1" = 20'-0"



1 ENTRANCE FEATURE LANDSCAPE PLAN  
Scale: 1" = 10'-0"

PROJECT NO.: 211084

PROJECT MANAGER: JIM

DESIGNED BY: JIM

DRAWN BY: JIM

ORIGINAL ISSUE DATE: 11/29/22

NO. 1

DATE 01-31-23

DESCRIPTION MUNICIPALITY COMMENTS

NO. 2

DATE 02-28-23

DESCRIPTION TREE CALIPER REVISIONS

LANDSCAPE ENLARGEMENTS

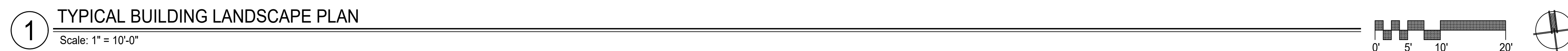
ELLIOT PARC

COLUMBUS

3500 Snouffer Road,  
Suite 225  
Columbus, OH 43235  
614.761.1661 phone  
www.v3co.com

DRAWING NO. L-3





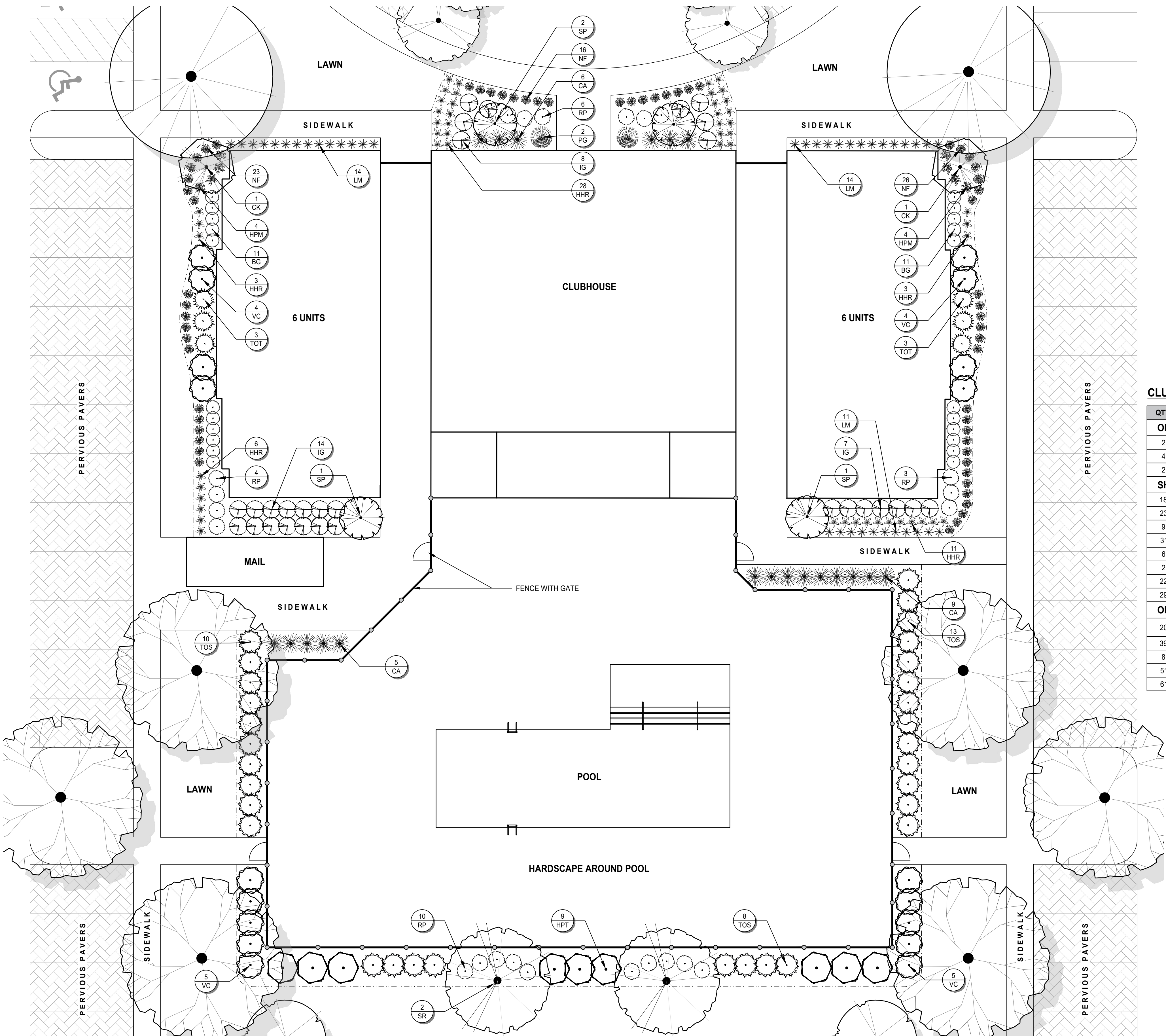
**1** TYPICAL BUILDING LANDSCAPE PLAN  
Scale: 1" = 10'-0"

## TYPICAL BUILDING - PLANT LIST

QTY.	CODE	COMMON NAME	BOTANICAL NAME	INSTALL SIZE	CONDITION
<b>SHRUBS</b>					
12	CAE	VARIEGATED REDTWIG DOGWOOD	CORNUS ALBA 'ELEGANTISSIMA'	5 GAL.	CONTAINER
4	VC	KOREAN SPICE VIBURNUM	VIBURNUM CARLESII	5 GAL.	CONTAINER
10	JP	SEA GREEN JUNIPER	JUNIPERUS X PFITZERIANA 'SEA GREEN'	3 GAL.	CONTAINER
14	BG	GREEN GEM BOXWOOD	BUXUS 'GREEN GEM'	3 GAL.	CONTAINER
4	PG	DWARF ALBERTA SPRUCE	PICEA GLAUCA 'CONICA'	5 GAL.	CONTAINER
14	JV	GREY OWL JUNIPER	JUNIPERUS VIRGINIANA 'GREY OWL'	3 GAL.	CONTAINER
<b>ORNAMENTAL GRASSES &amp; PERENNIALS</b>					
18	CA	KARL FOERSTER FEATHER REED GRASS	CALAMAGROSTIS ACUTIFLORA 'KARL FOERSTER'	2 GAL.	CONTAINER

PROJECT NO.: 211084		ORIGINAL ISSUE DATE: 11/29/22				REV IS I O N S	
PROJECT MANAGER:		NO.	DATE	DESCRIPTION	NO.	DATE	DESCRIPTION
DESIGNED BY:		1	01-31-23	MUNICIPALITY COMMENTS			
		2	02-28-23	TREE CALIPER REVISIONS			
DRAWN BY:							
JM							



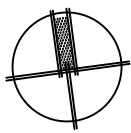
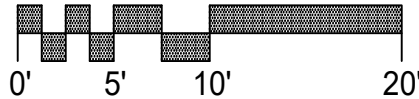


CLUBHOUSE - PLANT LIST

QTY.	CODE	COMMON NAME	BOTANICAL NAME	INSTALL SIZE	CONDITION
ORNAMENTAL TREES					
2	CK	KOUSA DOGWOOD	CORNUS KOUSA	6' HT.	CONTAINER
4	SP	DWARF KOREAN LILAC TREE	SYRINGA 'PALIBIN'	6' HT.	CONTAINER
2	SR	IVORY SILK TREE LILAC	SYRINGA RETICULATA 'IVORY SILK'	2" CAL.	CONTAINER
SHRUBS					
18	VC	KOREAN SPICE VIBURNUM	VIBURNUM CARLESII	5 GAL.	CONTAINER
23	RP	PEACH DRIFT ROSE	ROSA 'PEACH DRIFT'	2 GAL.	CONTAINER
9	HPT	TARDIVA HYDRANGEA	HYDRANGEA PANICULATA 'TARDIVA'	5 GAL.	CONTAINER
31	TOS	EMERALD GREEN ARBORVITAE	THUJA OCCIDENTALIS 'SMARAGD'	6' HT.	CONTAINER
6	TOT	TOM THUMB ARBORVITAE	THUJA OCCIDENTALIS 'TOM THUMB'	3 GAL.	CONTAINER
2	PG	DWARF ALBERTA SPRUCE	PICEA GLAUCA 'CONICA'	5 GAL.	CONTAINER
22	BG	GREEN GEM BOXWOOD	BUXUS 'GREEN GEM'	3 GAL.	CONTAINER
29	IG	COMPACT INKBERRY	ILEX GLABRA 'COMPACTA'	3 GAL.	CONTAINER
ORNAMENTAL GRASSES & PERENNIALS					
20	CA	KARL FOERSTER FEATHER REED GRASS	CALAMAGROSTIS ACUTIFLORA 'KARL FOERSTER'	2 GAL.	CONTAINER
39	LM	VARIEGATED LILYTURF	LIRIOPE MUSCARI 'VARIEGATA'	1 GAL.	CONTAINER
8	HPM	PARDON ME DAYLILY	HEMEROCALLIS 'PARDON ME'	1 GAL.	CONTAINER
51	HHR	HAPPY RETURNS DAYLILY	HEMEROCALLIS 'HAPPY RETURNS'	1 GAL.	CONTAINER
61	NF	WALKER'S LOW CATMINT	NEPETA X FAASSENII 'WALKER'S LOW'	1 GAL.	CONTAINER

1 CLUBHOUSE LANDSCAPE PLAN

Scale: 1" = 10'-0"



PROJECT NO.: 211084  
PROJECT MANAGER:  
DESIGNED BY:  
DRAWN BY: JM

ORIGINAL ISSUE DATE: 11.29.22  
REVISIONS  
NO. DATE DESCRIPTION  
1 01-31-23 MUNICIPALITY COMMENTS  
2 02-28-23 TREE CALIPER REVISIONS

LANDSCAPE ENLARGEMENTS  
ELLIOT PARC  
COLUMBUS

3500 Snouffer Road,  
Suite 225  
Columbus, OH 43235  
614.761.1661 phone  
www.v3co.com

DRAWING NO.  
L-5



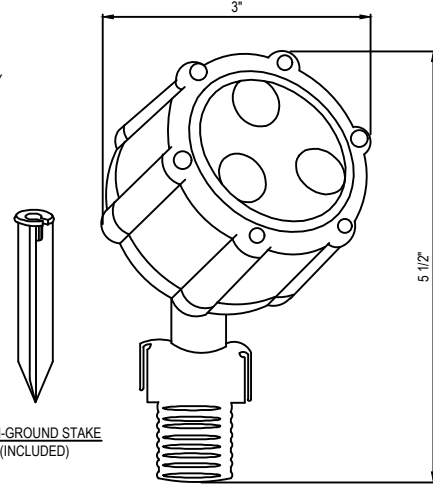






3"

5 1/2"



**NOTES:**

1. DO NOT SCALE DRAWINGS.
2. INSTALLATION IS TO BE COMPLETED IN ACCORDANCE WITH MANUFACTURER'S SPECIFICATIONS.
3. CONTRACTORS NOTE: FOR PRODUCT AND COMPANY INFORMATION VISIT [www.CADdetails.com](http://www.CADdetails.com)/REFERENCE NUMBER 470-273.



Dimensions	
Height	2.40"

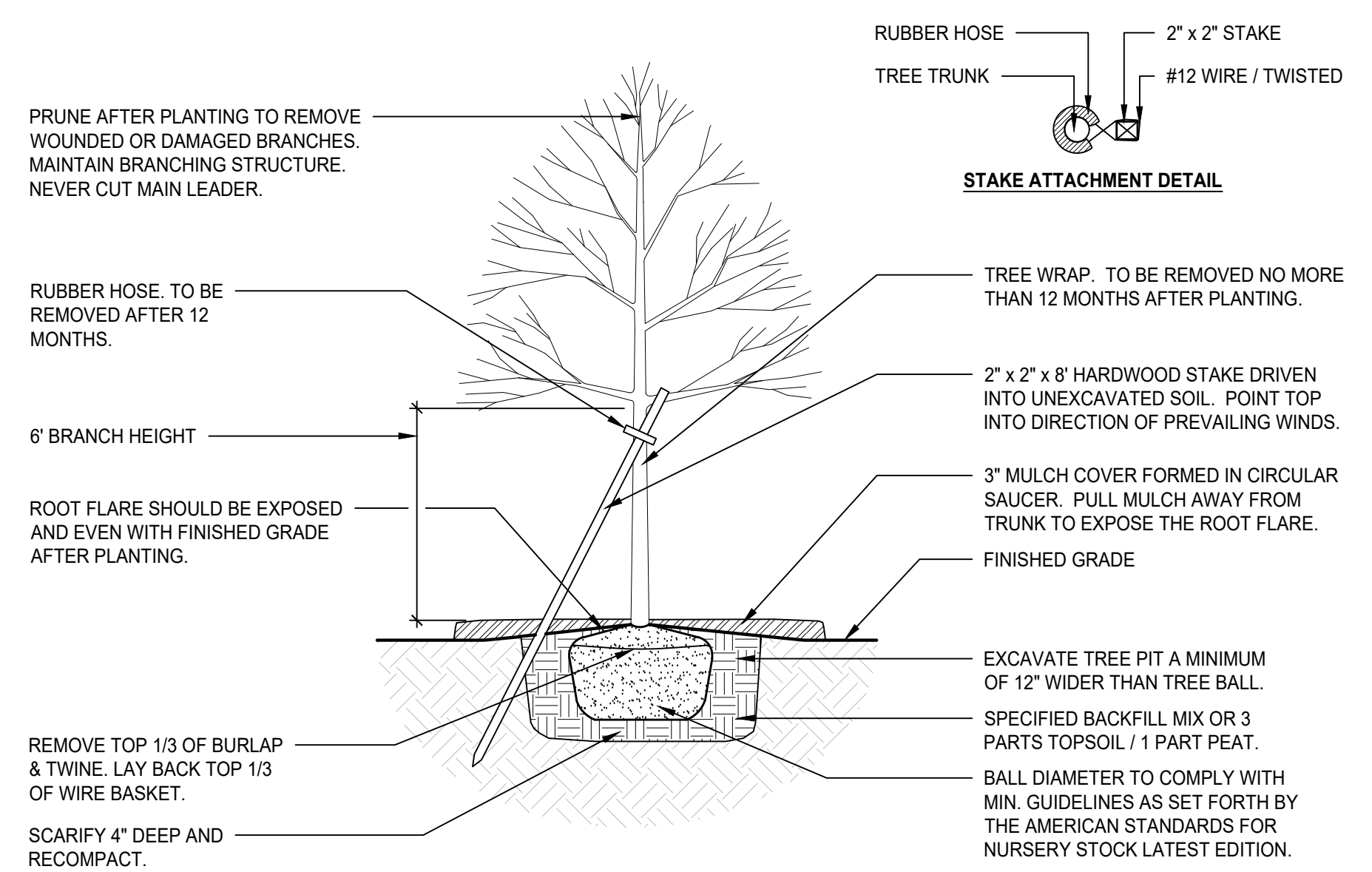
Lamp Included	Bulb Listing	Light Source	Max Wattage/Range	Bulb Product ID	Dimming
No	Non-Applicable				

**Kocher**  
1711 Fritz-Wendert-Strasse  
D-65926 Frankfurt, 1.16.44321.0210  
Fax: 069 402 5545-426-02 secret

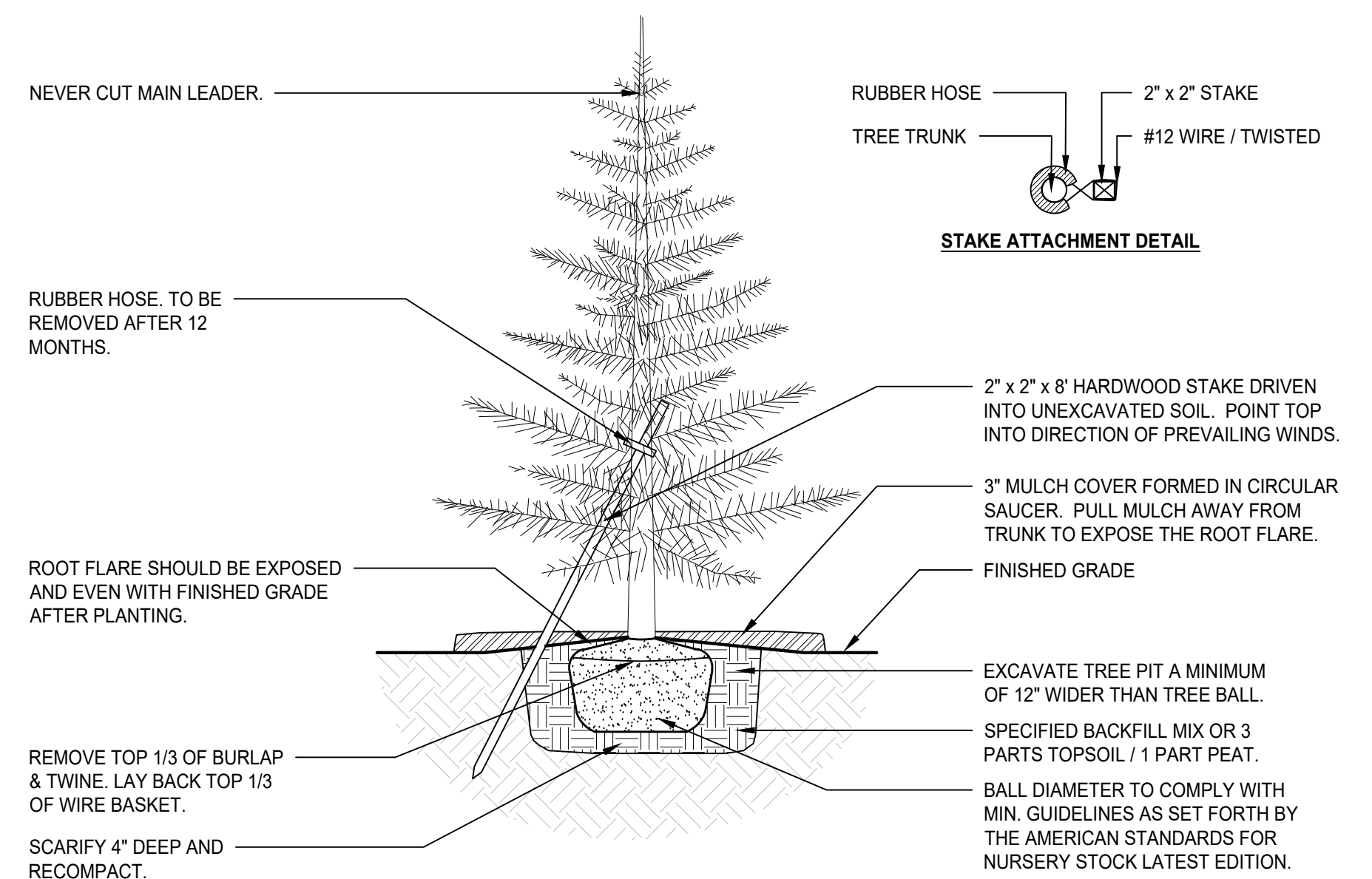
**Notes:**  
 1) Intentional plagiarism is subject to change without notice, no effect, no design or layout claim, other insurance and liability coverage.



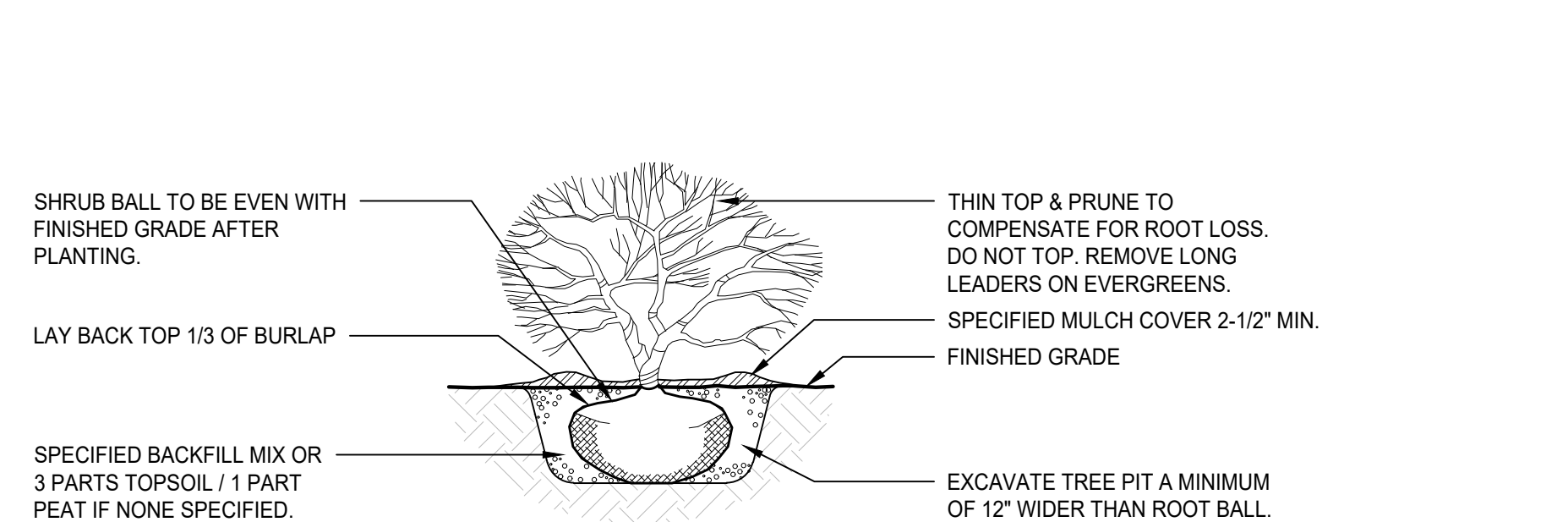
1. CONTRACTOR TO VERIFY WITH OWNER AND UTILITY COMPANIES THE LOCATIONS OF ALL UTILITIES PRIOR TO CONSTRUCTION, TO DETERMINE, IN THE FIELD, THE ACTUAL LOCATIONS AND ELEVATIONS OF ALL EXISTING UTILITIES WHETHER SHOWN ON THE PLANS OR NOT. THE CONTRACTOR SHALL CALL UTILITY PROTECTION SERVICE 72 HOURS PRIOR TO CONSTRUCTION.
2. EXAMINE FINISH SURFACE, GRADES, TOPSOIL QUALITY AND DEPTH. DO NOT START ANY WORK UNTIL UNSATISFACTORY CONDITIONS HAVE BEEN CORRECTED. VERIFY LIMITS OF WORK BEFORE STARTING.
3. CONTRACTOR TO REPAIR ALL DAMAGES TO EXISTING CONDITIONS AND BEARS RESPONSIBILITY FOR SATISFACTORY PERFORMANCE.
4. ALL PLANT MASSES TO BE CONTAINED WITHIN BARK MULCH BED.
5. BED LINE TO BE NO LESS THAN 18" AND NO MORE THAN 24" FROM OUTER EDGE OF PLANT MATERIAL BRANCHING.
6. ALL SHRUBS TO BE A MINIMUM OF 4'-0" FROM PAVEMENT EDGE UNLESS SPECIFICALLY NOTED OTHERWISE.
7. CONTRACTOR SHALL MAINTAIN POSITIVE DRAINAGE IN LAWN AREAS.
8. FINE GRADE LAWN AREAS TO PROVIDE A SMOOTH AND CONTINUAL GRADE, FREE OF IRREGULARITIES OR DEPRESSIONS
9. IN AREAS DESIGNATED "ANNUALS". LANDSCAPE CONTRACTOR TO PREPARE SOIL WITH MINIMUM 8" DEEP PLANT MIXTURE AND A MINIMUM 2" DEEP BARK MULCH FOR SUBSEQUENT PLANTING BY OWNER,
10. QUANTITIES SHOWN ARE INTENDED TO ASSIST CONTRACTOR IN EVALUATING THEIR OWN TAKE-OFFS AND ARE NOT GUARANTEED AS ACCURATE REPRESENTATIONS OF REQUIRED MATERIALS. THE CONTRACTOR SHALL BE RESPONSIBLE FOR HIS BID QUANTITIES AS REQUIRED BY THE PLAN AND SPECIFICATIONS.
11. COORDINATE LANDSCAPE INSTALLATION WITH INSTALLATION OF UNDERGROUND SPRINKLER, SYSTEM (IF APPLICABLE).
12. WHERE PROPOSED TREE LOCATIONS OCCUR UNDER EXISTING OVERHEAD UTILITIES OR CROWD EXISTING TREES, NOTIFY THE CONSULTANT TO ADJUST TREE LOCATIONS.



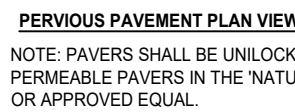
NOT TO SCALE TREES UP TO 3" CALIPER



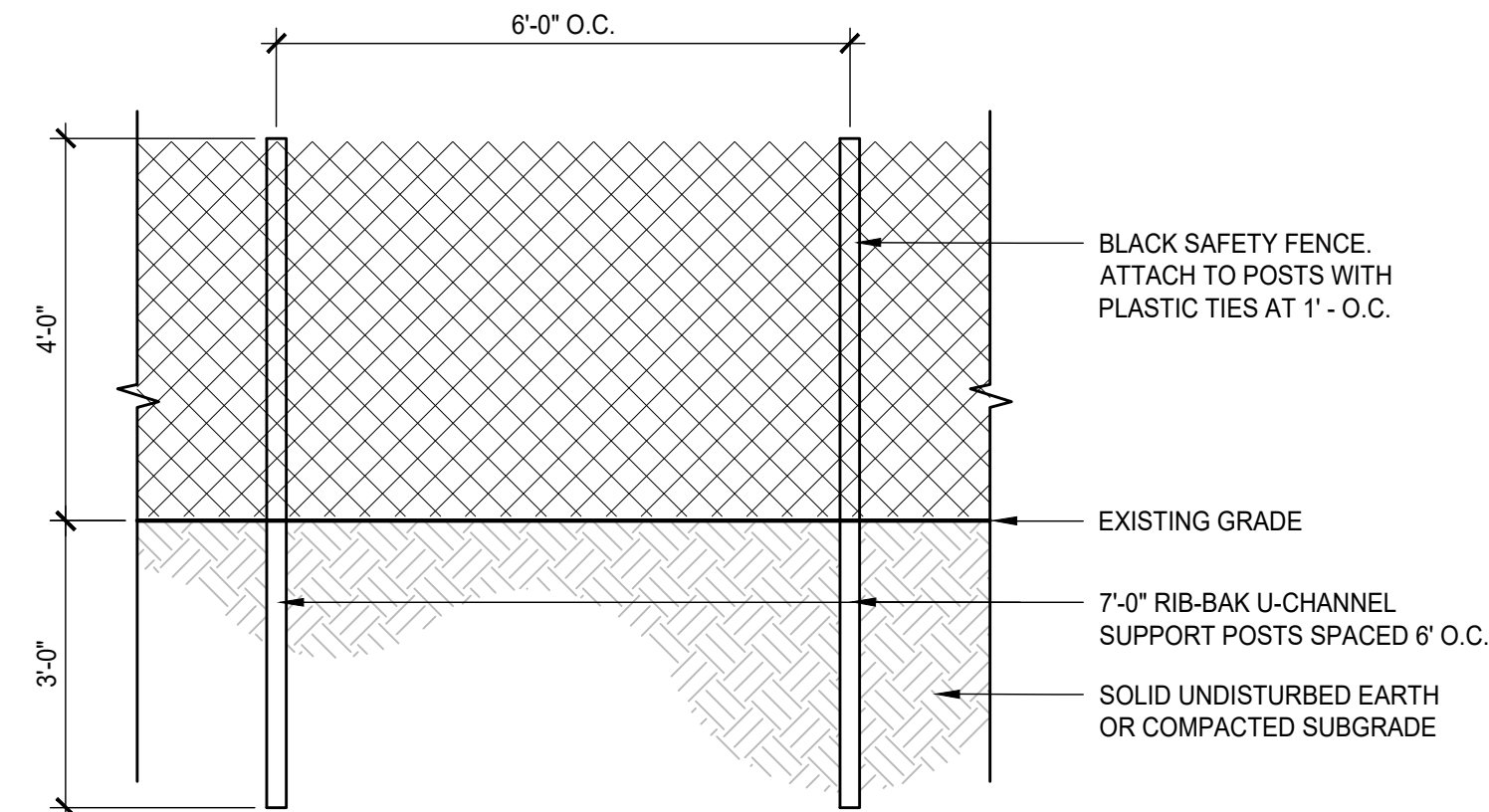
NOT TO SCALE TREES UP TO 8' HEIGHT



NOT TO SCALE



1 PERVIOUS  
NOT TO SCALE



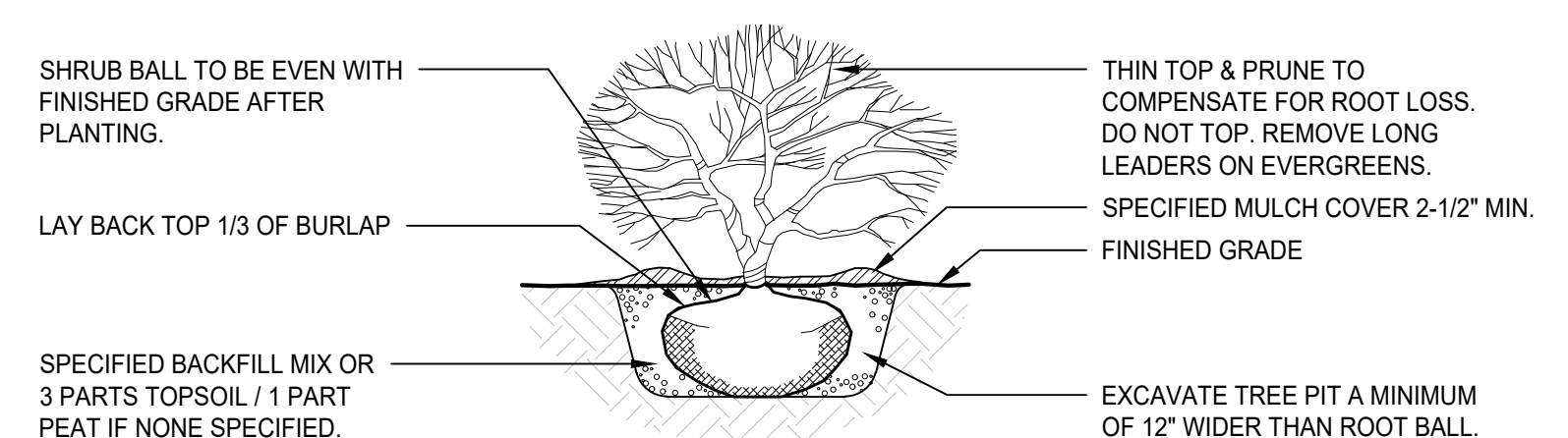
3 TREE PRO  
Scale: 1/2" = 1'-0"



2 FENCE AND  
Scale: 3/8" = 1'-0"



4 VINYL PRI  
NOT TO SCALE



NOT TO SCALE